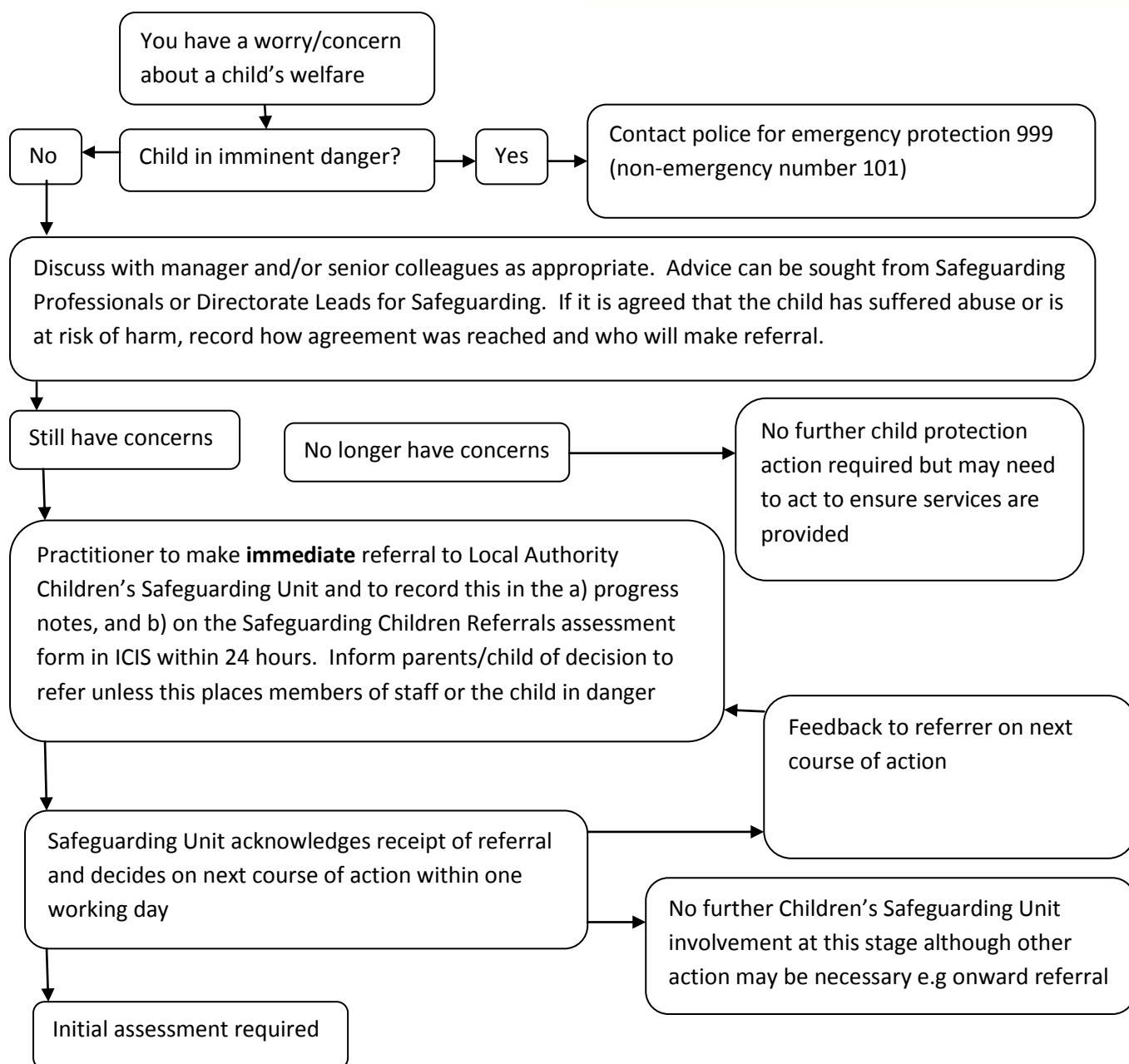


What to do if you are worried that a child is being abused



Where to record Safeguarding activity? Use DATIX when an incident involving a service user has triggered a safeguarding concern. Record CAF's and referrals to children's social care services in the safeguarding children referral's document within ICIS assessments. For non GMW related safeguarding use SAFECASE (within DATIX)

Telephone numbers for Safeguarding Children Units and professionals:

Bolton: 01204 337479 (9-5pm) 01204 337777 (out of hours)
Salford (including Prestwich site): 0161 603 4500 (24hr)
Trafford: 0161 912 5125 (9-5pm) 0161 912 2020 (out of hours)
Manchester: 0161 234 5001 (24 hour service)
Wigan and Leigh: 01942828300 (9-6pm) 0161 8342436 (out of hours)
Blackburn with Darwen: 01254 587547 (24 hour service)
Central Lancashire: 0845 0530009

Carlisle & Eden: 01228 227002
Allerdale & Copeland: 01900 706325
South Lakes & Barrow-in-Furness: 01229 407894
(Cumbria areas out of hours number: 01228 526690)
GMW Named Nurse: 0161 772 3611
GMW Named Doctor: 0161 772 3811
GMW Safeguarding Children Practitioner: 0161 772 3652
Childline: free phone (24 hours) 0800 1111
Police non-emergency (all areas): 101