

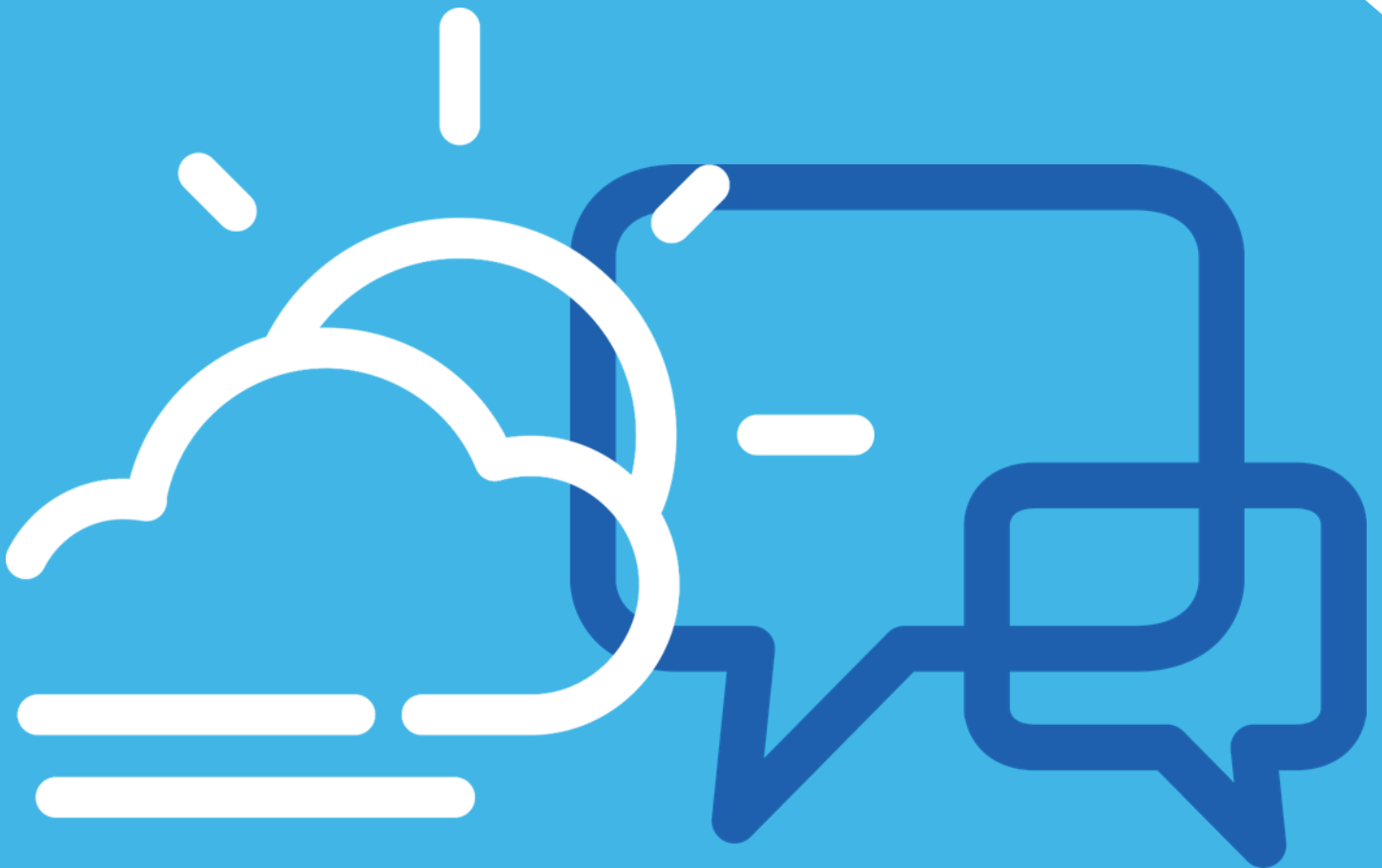


**Greater Manchester
Mental Health**
NHS Foundation Trust

Research & Innovation Strategy

2017 - 2021

Greater Manchester Mental Health NHS
Foundation Trust



Improving Lives

Research & Innovation Strategy 2017 – 2021

This strategy has been developed taking into account the new Shared Values for the Trust, the Five Year Forward View for Mental Health (Feb 2016) and the former Trusts' research strategies ensuring we are taking the best from both organisations. Delivery against the strategy will be aligned to the timescales within the Five Year Forward View. The new shared values for the Trust are:

We inspire hope

We work together

We are caring and compassionate

We value and respect

We are open and honest

Our Aims

Ensure our research and innovation activity is relevant to Trust, NHS and service user and carer priorities

Maximise the opportunities for the community served by GMMH to participate in research and to benefit from developments in both research and innovation

Ensure that clinical services are informed and improved by research involvement, dissemination and translation and innovation adoption

Ensure the Trust maximises financial opportunities and income from research and innovation while ensuring value for money

Ensure the Trust becomes a world-leading organisation for mental health research and innovation

Ensure our research includes an emphasis on prevention in addition to treatment of established mental health problems

A summary of specific R&I objectives, actions and monitoring

Objective	Actions	Monitoring
R&I will enable the delivery of the Trust vision of academically-informed services & it will be conducted in line with core shared values	<p>Ensure patient and public involvement (PPI) in research units and co-production of research</p> <p>Increase research focused on hope, recovery and resilience</p>	Number of user-led research projects, service user researchers, studies focused on these topics

Ref: RI04	Issue date: 23/03/2018	Version number: 1.0
Status: Approved	Next review date: 23/03/2021	Page 1 of 4

<p>Align R&I aspirations with the strategic direction of the Trust and national NHS objectives, specifically 5YFVMH and GM MH strategy and the ROAMER initiative</p>	<p>Establish research units on topics of relevance</p> <p>Developing and implementing new and better interventions for mental health and wellbeing</p> <p>Facilitate development of research on substance and alcohol misuse and forensic services</p>	<p>Increase research on topics of suicide prevention, patient safety, CAMHS, digital interventions, psychological therapies, first episode psychosis, dementia, acute care and perinatal mental health. Themes of access and choice, stigma reduction and empowerment, prevention, integration and sustainability should be evident.</p> <p>Establish interest groups for substance and alcohol misuse and forensic services</p>
<p>To develop a high quality research and innovation culture which normalises research and innovation by embedding it into policies and practice</p>	<p>Integration of research active staff in clinical services and management/planning forums</p> <p>Network of clinical research and innovation leads and champions to embed in practice</p>	<p>Increased access to research participations for service users, carers and staff (numbers)</p> <p>Increase number of Trust-employed investigators</p> <p>Development of R&I courses at the Recovery Academy</p>
<p>R&I will be a major arm of Trust business both financially and reputationally. GMMH aims to become established as a world-leading organisation for MH research and innovation</p>	<p>Research units</p> <p>SI applications</p> <p>Setting up international collaborations and networks for mental health research</p> <p>Incentivise applications via proportion of RCF returned to PI</p>	<p>Increase involvement in commercial research, NIHR income, NIHR senior investigators, international collaborations, innovation adoption</p>
<p>To increase the opportunities for service users and carers to participate in high quality</p>	<p>More NIHR applications</p> <p>More links with industry</p>	<p>Increase number of portfolio studies and commercial studies and</p>
<p>Ref: RI04</p>	<p>Issue date: 23/03/2018</p>	<p>Version number: 1.0</p>
<p>Status: Approved</p>	<p>Next review date: 23/03/2021</p>	<p>Page 2 of 4</p>

research which is relevant for the NHS	Identify and train more PIs FAIR and consent to approach processes	number of participants in these studies
Enhancing support for multidisciplinary research groups and equip staff and service users with research knowledge and skills	Establish R&I course at Recovery Academy Identification & support of academic career opportunities in partnership with HEI organisations including buddy scheme/mentoring Regular programme of research awareness and promotion events Development of in-house NHS researchers at all stages, across professions and in all clinical areas of importance to the Trust.	Prospectus, programmes, number of research active staff
To provide high standards of research governance and management	Conducting regular audits of Trust-sponsored studies CTIMP set-up monitoring strategy R&I Pharmacy strategy	Audit results MHRA readiness
To ensure the research we deliver is relevant to the priorities of local service users and carers and that users are involved in co-production of research	Establish SURGs and other PPI activity Delphi studies Service users to be central to the R&I strategy, including setting priorities and providing research leadership and membership of R&I committee	Service user involvement in all phases of research Increased PPI, numbers of consultations, consultants, service user researchers, co-applicants/grant holders

<p>Disseminating and translating research results into clinical and service developments</p>	<p>Relevant service representation at R&I committee</p> <p>R&I representation at QGC and NIAG</p> <p>Regular programme of dissemination and translation events</p> <p>Academic staff integrated into clinical service planning</p>	<p>Staff numbers at events, compliance with NICE guidelines, service evaluations</p>
--	--	--